



SPECIFICATION



Product name: UHF RFID Tag

Item No.: LDR-7620L

Version: V1.0

Date: 2019.11.29

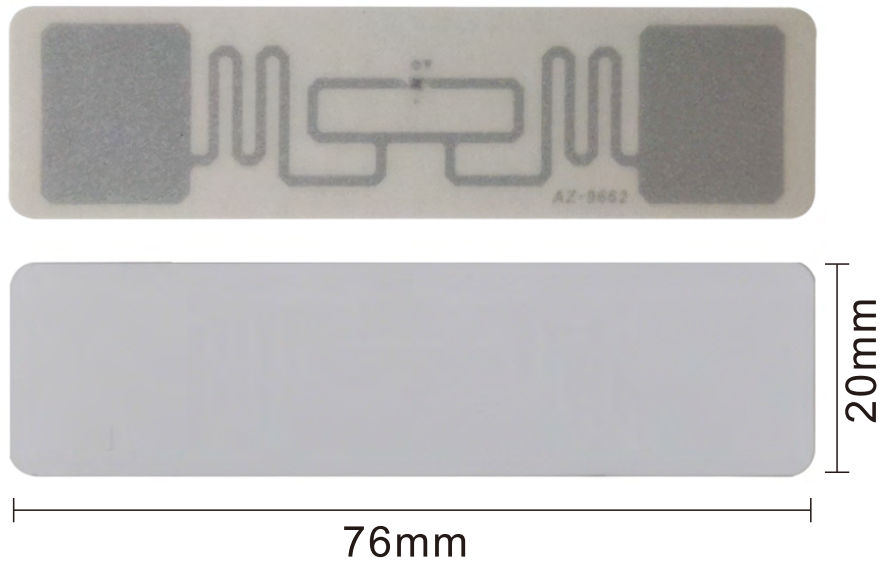
Tel: +86-755-89379391

Fax: +86-755-89379456

E-mail: sales@leadercolor.com

www.leadercolor.com

Add: 25th Anxing Rd, Sanjiaolong industrial, Anliang Village, Henggang Town, Longgang District, Shenzhen, China



Quick Details

Leadercolor LDR-7620L UHF RFID Label is designed in RFID technology with chip and inlay inside. It is mainly used for tracking cartons, shelf and plastic stuffs. Shape of label, long reading range over 10meters, self adhesive which makes it an excellent product for various objects' management.

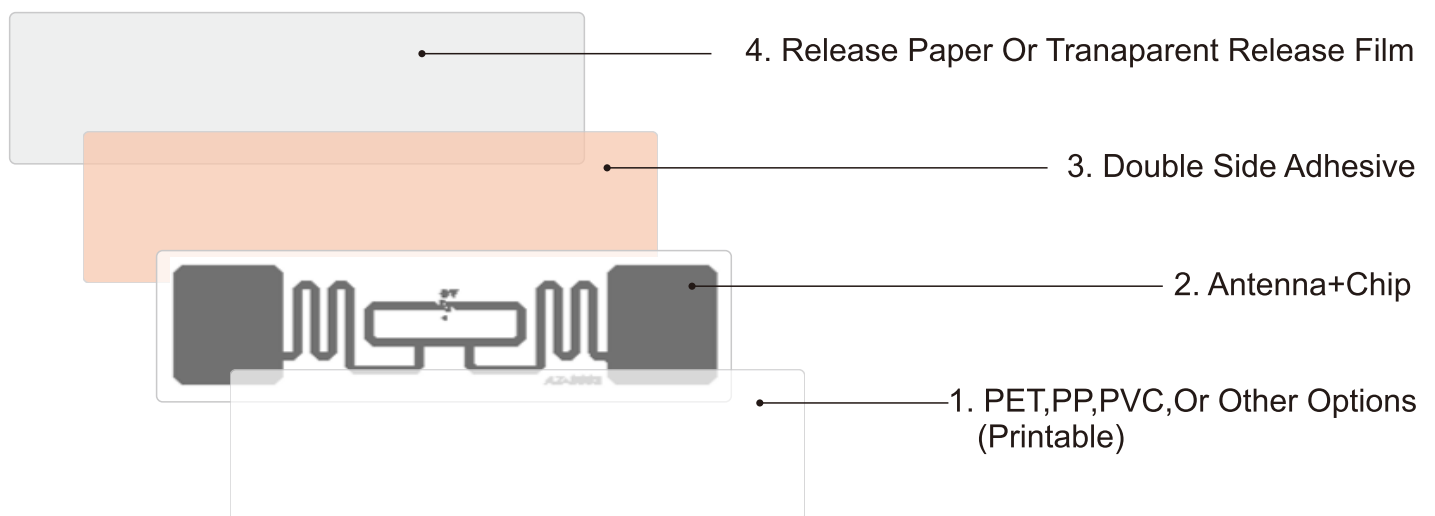
RFID Parameter

Model No.	LDR-7620L	
Type	Passive UHF RFID Label	
Protocol	ISO/IEC 18000-6C, EPC Class1 Gen2	
Frequency	Worldwide 840-960Mhz, US 902-928mhz, EU 865-868Mhz	
Chip	Impinj Monza 5	Alien H3
Memory	EPC 128bits	EPC 96bits
	TID 48bits	TID 64bits
	User 32bits	User 512bis
Read&Write	Supported	
Read Range	1-8meters adjustable(reader and environment dependent)	
Data retention	10years	
Programming Cycles	100,000 cycles	
Anti-collision	Yes	

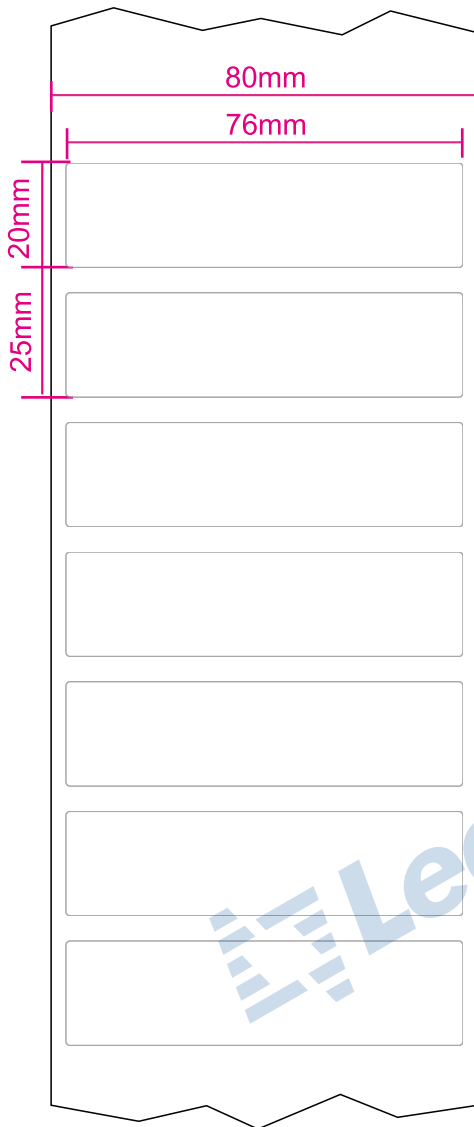
Physical Parameter

Size	76×20mm / 2.99×0.79inch
Substrate Material	Transparent Release Film
Antenna Material	Aluminum Etching
Surface Material	PP Waterproof, Thermal Paper or Transfer;
Color	White
Installation	Self adhesive
Operating Temperature	-25℃ ~ +65℃
Operating Humidity	20% ~ 90%RH
Package	2000pcs/roll, 2500pcs/roll, 3000pcs/roll
Customized Service	Optional Chips: Alien Higgs-3; Alien Higgs-4; NXP Ucode 7; Impinj Monza4; Impinj Monza5; Optional Materials: Coated Paper; PVC Paper; Synthetic PP Paper; PET Paper; Optional Glues: Standard Glues; 3M Glues; Strong Glues; Optional Printing: Offset Printing; Barcode Printing; Series Number Printing; UV Printing Optional Crafts: Tamper Proof ; Encoding; Optional Size: Customized

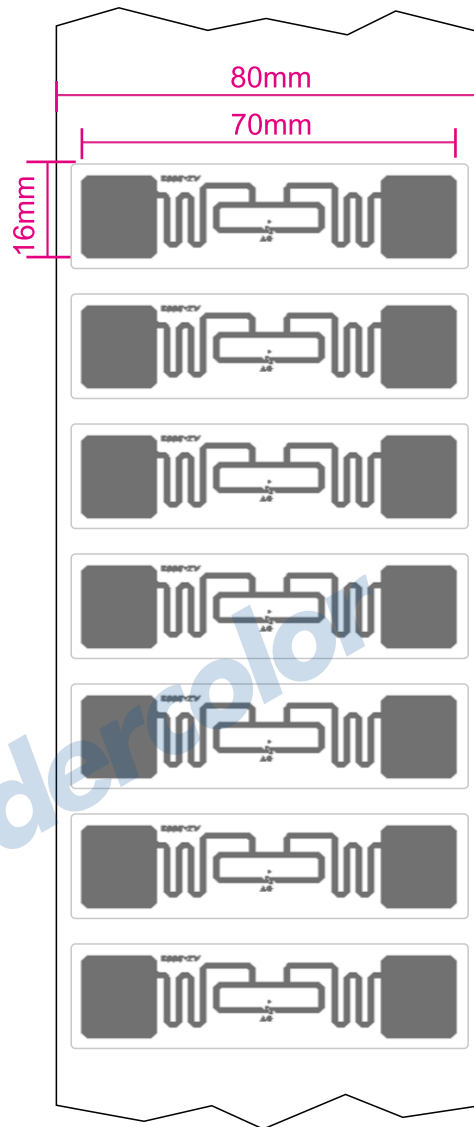
Structure



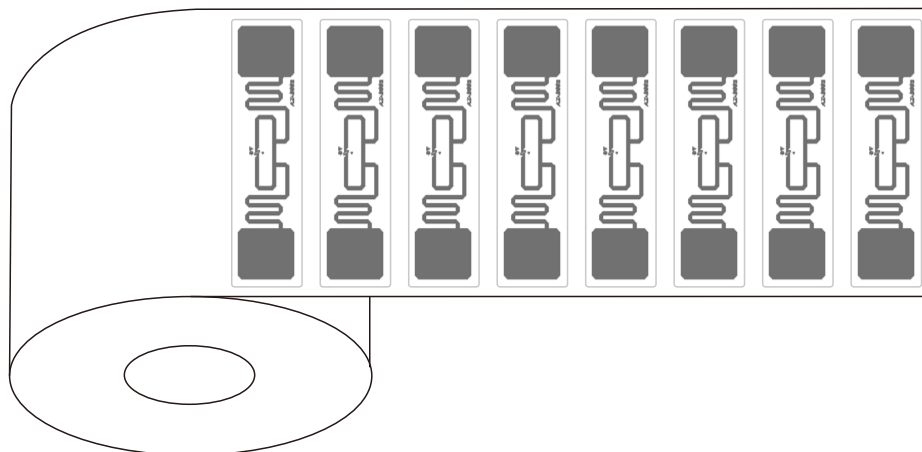
Front side



Back side



Expand Direction



 Application

- Logistic warehouse management, item level management;
- Enterprises, banks, insurances companies;
- Manufacturing and warehouse management

